



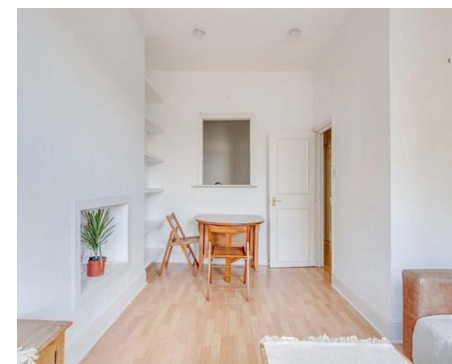
NEWINGTON  
LONDON

2 Bedrooms

Apartment

Located in London

£600 Per Month



info@newingtonstates.com

<http://www.newingtonstates.com>

020 7724 2233



A bright and recently refurbished two-bedroom apartment situated on the 4th floor of this well-regarded 24-hour portered building, located just off the iconic Abbey Road and within easy reach of St John's Wood High Street and Underground Station (Jubilee Line).

The accommodation comprises an open-plan reception room with fitted kitchen, a double bedroom, a single bedroom and a modern shower room. Additional benefits include wooden flooring throughout, lift access and portage.

EPC rating: D

### Energy Efficiency Rating: D

Agents Note: Whilst every care has been taken to prepare these particulars, they are for guidance purposes only. All measurements are approximate and are for general guidance purposes only and whilst every care has been taken to ensure their accuracy, they should not be relied upon and potential buyers/tenants are advised to recheck the measurements.

# NEWINGTON LONDON

60 Upper Montagu Street

London

W1H 1SN

020 7724 2233

[info@newingtonstates.com](mailto:info@newingtonstates.com)

<http://www.newingtonstates.com>